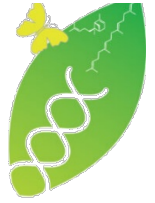
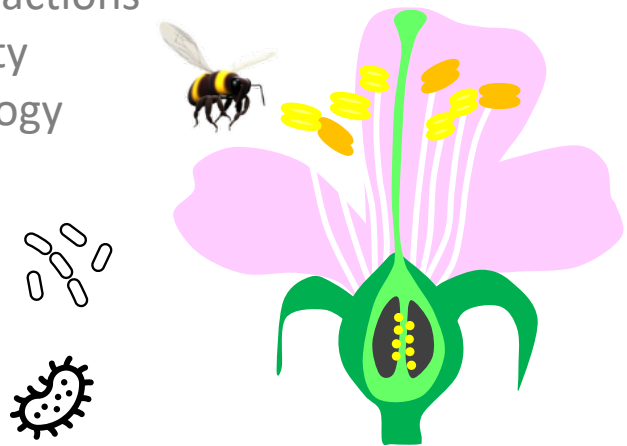


Plant-Animal Interactions

Xu lab
Evolutionary Plant Sciences

Relevant topics:

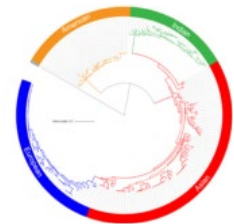
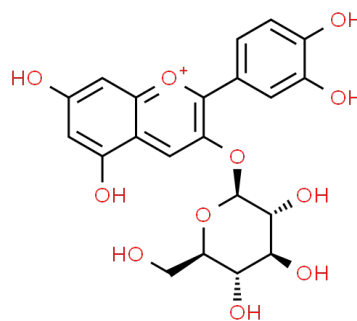
Principles of plant-animal interactions
 Evolution in a mixed community
 Recognition and chemical ecology
 Multitrophic interactions
 Human mediated effects



Discuss recent scientific discoveries

Learn methods in ...

... ecology
 ... bioinformatics
 ... molecular biology
 ... analytical chemistry
 ... data analysis (with R)



Contribute to current research projects

Plan, execute and analyze experiments



Lecturer:

Prof. Shuqing Xu (shuqinxu@uni-mainz.de)
 Dr. Martin Schäfer
 Dr. Pablo Duchén

Part A & C: April & May 2023

Part B: 5-weeks time flexible in 2023