

Warfare dendrochronology: Trees witness the deployment of the German battleship *Tirpitz* in Norway

Claudia Hartl^a, Scott St. George^b, Oliver Konter^a, Lorenz Harr^a, Denis Scholz^c, Andreas Kirchhefer^d, Jan Esper^a

^a Department of Geography, Johannes Gutenberg University Mainz, Johann-Joachim-Becher-Weg 21, 55128 Mainz, Germany, c.hartl@geo.uni-mainz.de

^b Department of Geography, Environment and Society, University of Minnesota, 267 19th Avenue South, Minneapolis, United States of America 55455

^c Institute for Geosciences, Johannes Gutenberg University Mainz, Johann-Joachim-Becher-Weg 21, 55128 Mainz, Germany

^d Dendroökologen, Skogåsvegen 6, 9011 Tromsø, Norway

Corresponding author: Claudia Hartl, c.hartl@geo.uni-mainz.de

Appendix A. Supplementary data

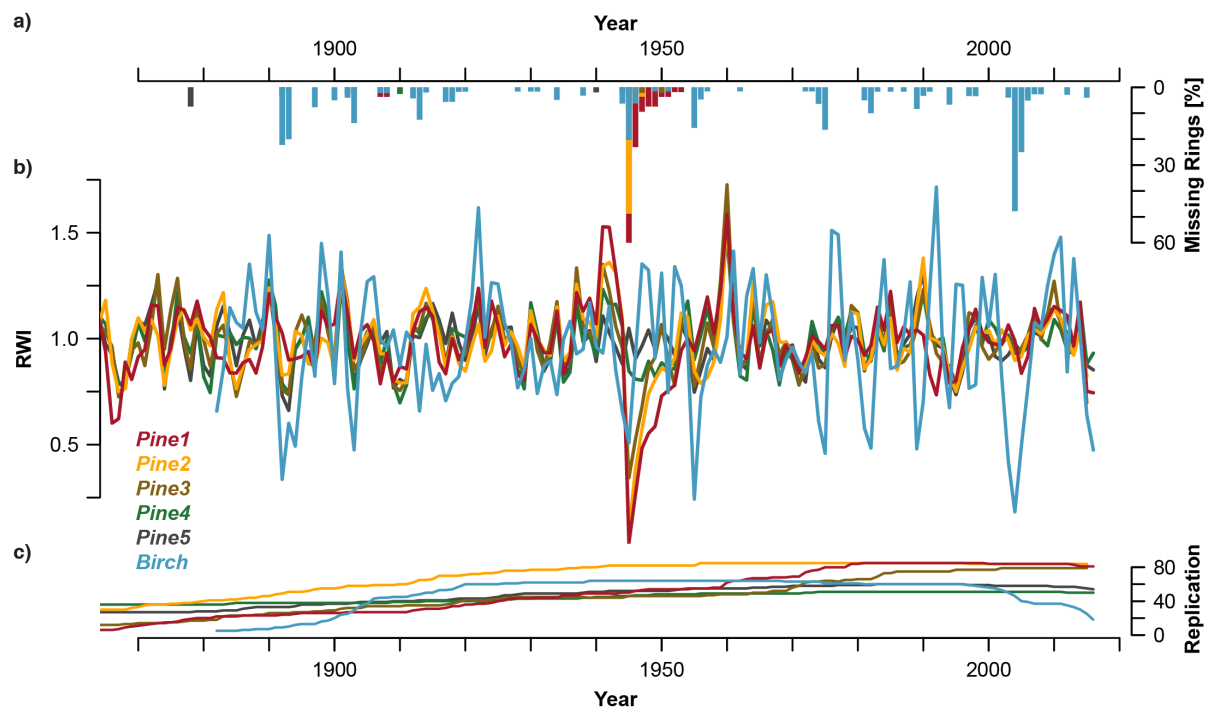


Fig. A.1. Tree-ring metrics of birch and pine growth near the Kåfjord close to the *Tirpitz* anchor point (1 = closest to 5 = furthest). a) shows the percentage of trees at each site with an absent ring for each year, b) the detrended ring-width index (RWI) chronologies, and c) the sample replication (number of increment cores) as an estimate of the age structure at the different sites.