

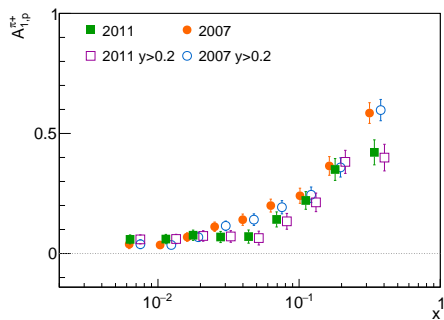
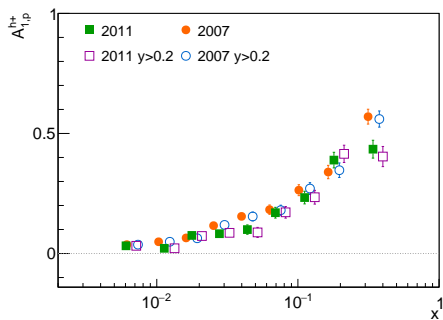
Identified hadron asymmetries

Malte Wilfert

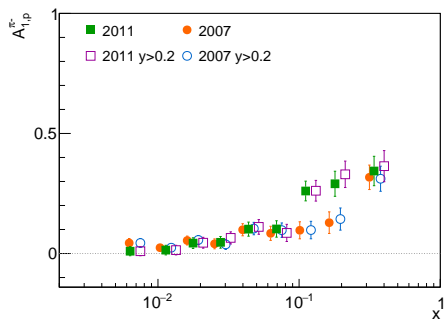
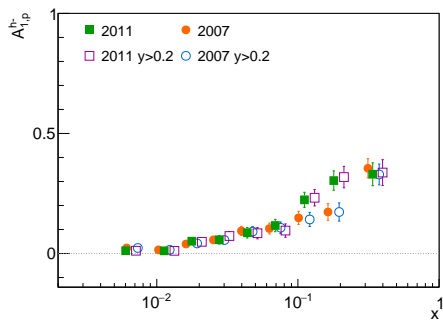
Institut für Kernphysik - Johannes Gutenberg-Universität Mainz

31th May 2017

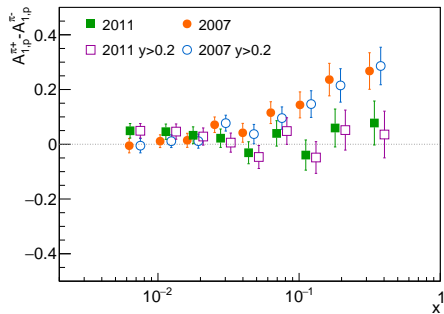
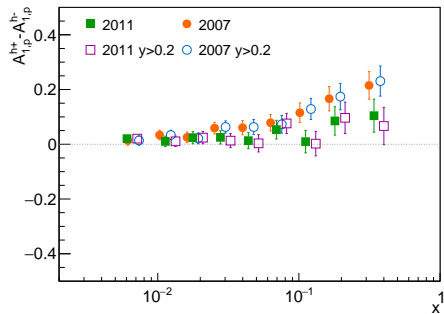
• $y > 0.2$



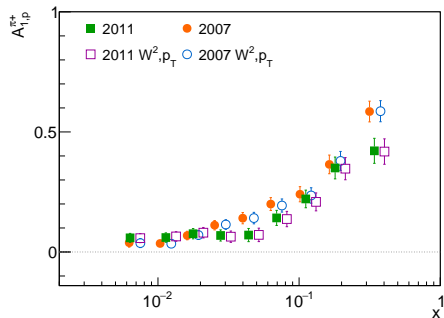
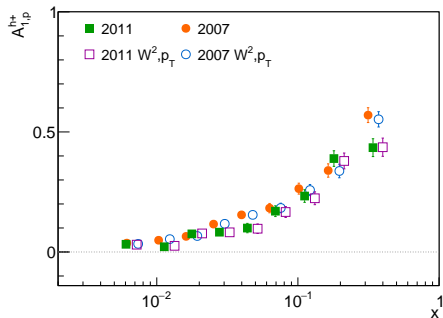
• $y > 0.2$



• $y > 0.2$

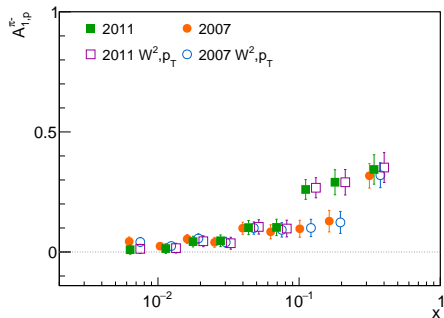
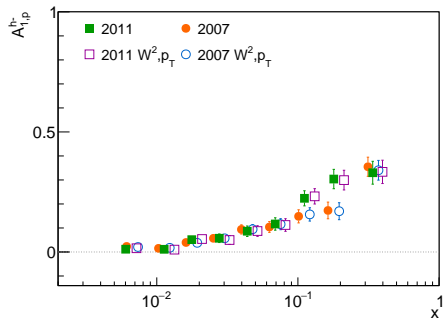


- $W^2 > 5 \text{ GeV}^2/c^2$
- $p_T > 0.1 \text{ GeV}/c$

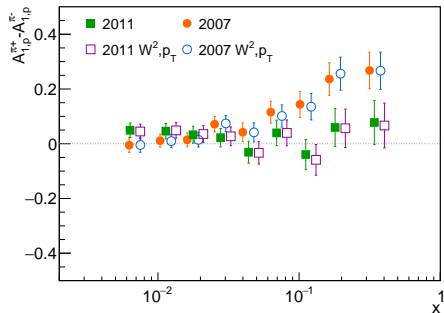
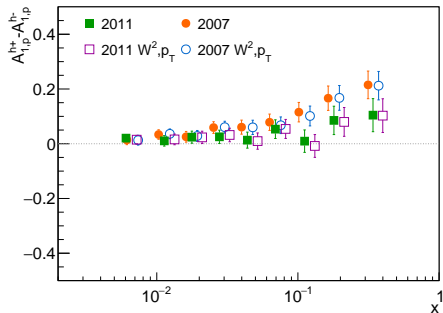


y cut

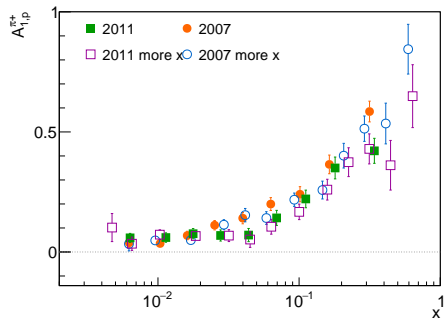
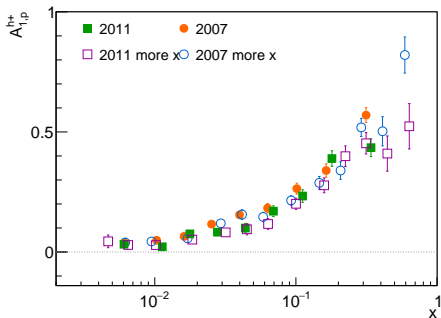
- $W^2 > 5 \text{ GeV}/c^2$
- $p_T > 0.1 \text{ GeV}/c$



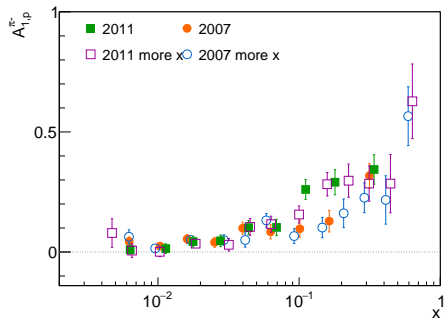
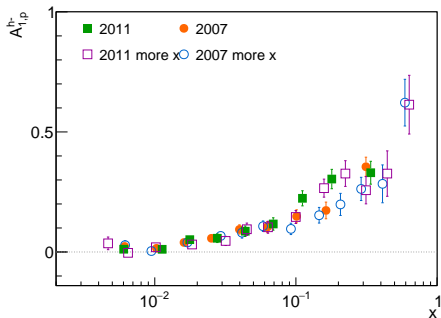
- $W^2 > 5 \text{ GeV}^2/c^2$
- $p_T > 0.1 \text{ GeV}/c$



- Artems bining
- My binning



- Artems binning
- My binning



- Artems bining
- My binning

