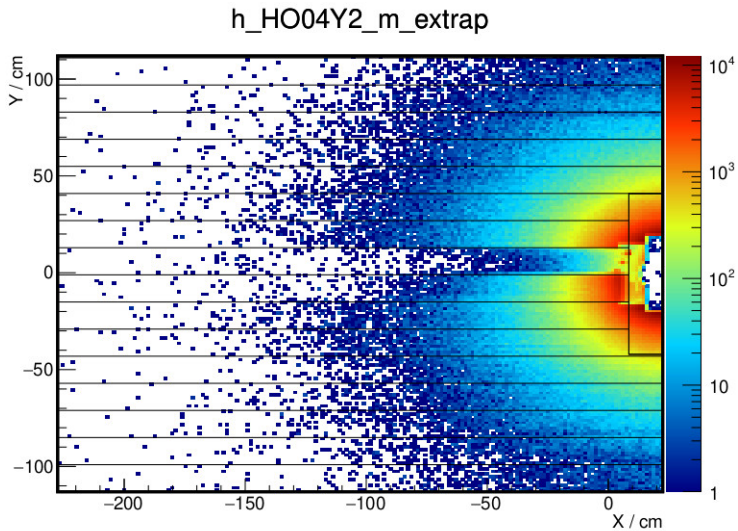


Summary:

- Cable swap in both middle stripes of HO03
→ Discovered and fixed in 2017
- 2016 missing Stripe in HO04Y2 (center)
→ fixed for 2017
- Hotspot in track distribution
- Position of H1 in 2016 and 2017

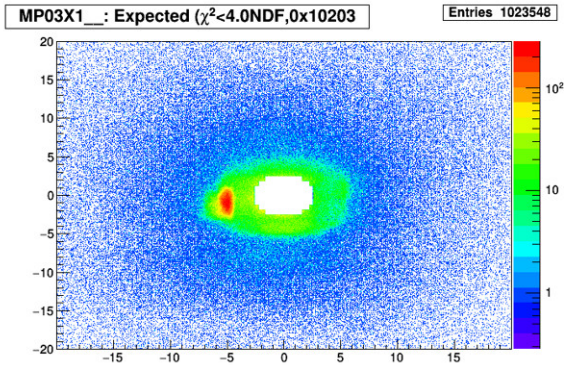
2016 missing Stripe in HO04Y2 (center) I



2016 missing Stripe in HO04Y2 (center) II

- 2016 P09 CT events
- Connected to cable swap in HO03 ?
- fixed without any intervention on HO04 for 2017
- problem present because during reconstruction also trigger information is used
 - ⇒ request for special production CT only

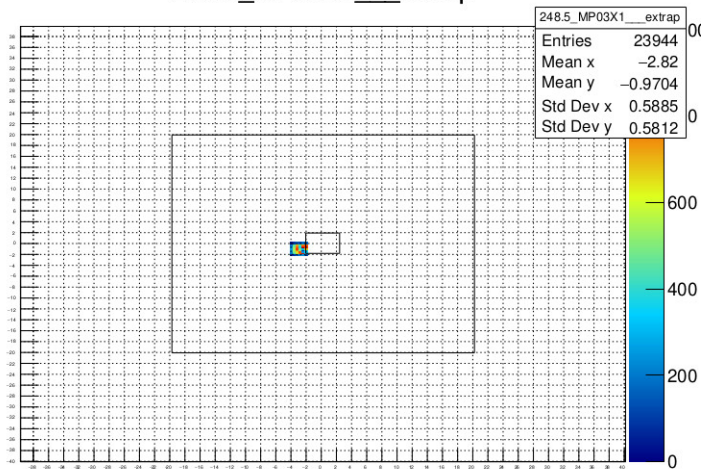
Hotspot in track distribution I



Hotspot in track distribution II

Extrapolated tracks at position of MP03X1 only in selected detector area

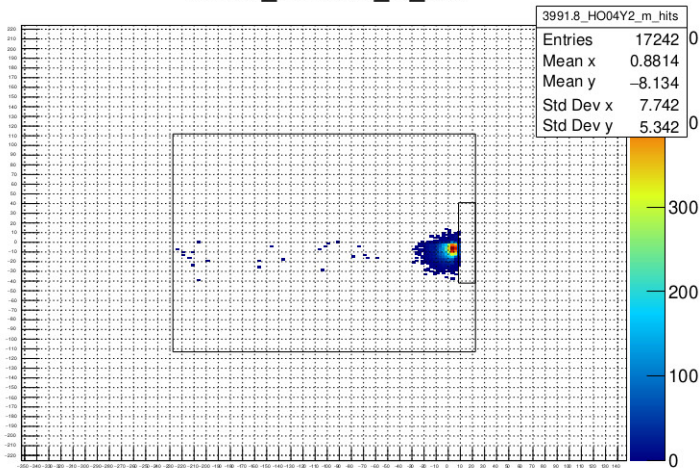
248.5_MP03X1___extrap



Hotspot in track distribution III

Tracks extrapolated to position of HO04Y2 + ask for hit in hodoscope

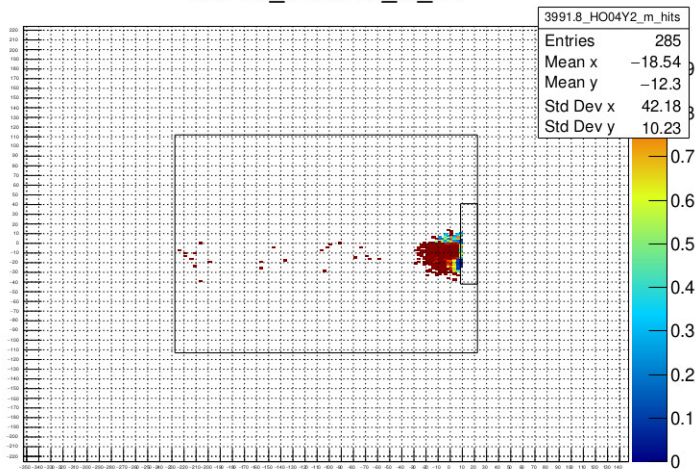
3991.8_HO04Y2_m_hits



Hotspot in track distribution IV

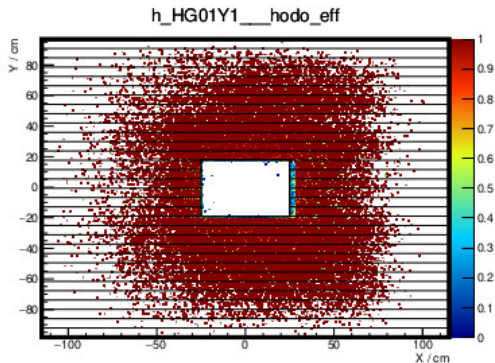
Pseudo efficiencies of HO04Y2

3991.8_HO04Y2_m_eff



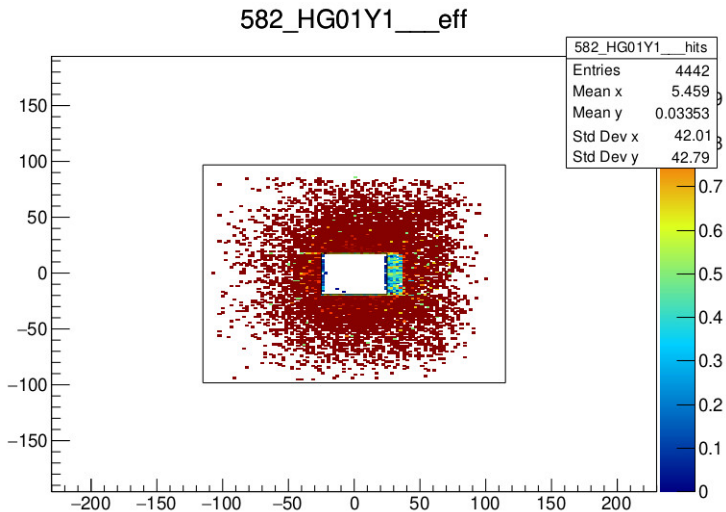
⇒ Hotspot because of longer strips in middle of hodoscope (beam

H1 position in 2016



shift of 3.6 ± 0.5 cm

H1 position in 2017



shift of 12 ± 2 cm